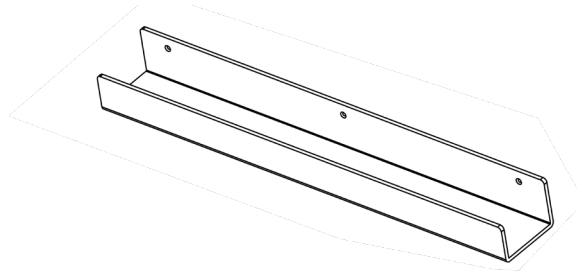




Acrylic 36" Floating Bookshelves - 2 Pack



OPTION A: Wood Stud Installation

Using the shelf as a guide, mark drilling locations on the wall. Use of a level and stud finder is recommended. Drill 1-9/16" (40mm) deep holes using a 3/32" (2.5mm) drill bit, then mount the shelf using the M4x40mm screws.

OPTION B: Drywall Installation

Using the shelf as a guide, mark drilling locations on the wall. Use of a level is recommended. Drill holes through the drywall using a 7/32" (5.5mm) drill bit, press the drywall anchors into the holes, then mount the shelf using the M4x40mm screws.

SKU: MOUNT-SF36C

Love your new VIVO setup and want to share?

Tag us in your photo! @vivo_us



Scan the QR code with your mobile device or follow the link for helpful videos and specifications related to this product.



<https://vivo-us.com/products/mount-sf36c>

WARNING: CHOKING HAZARD

SMALL PARTS - NOT FOR CHILDREN UNDER 3 YEARS. ADULT SUPERVISION IS REQUIRED.

WARNING!

If you do not understand these directions, or if you have any doubts about the safety of the installation, please call a qualified technician. Check carefully to make sure there are no missing or defective parts. Improper installation may cause damage or serious injury. Do not use this product for any purpose that is not explicitly specified in this manual and do not exceed weight capacity. We cannot be liable for damage or injury caused by improper mounting, incorrect assembly, or inappropriate use.

Open Monday-Friday from 7:00am-7:00pm CST,
our dedicated support team can offer immediate assistance with rapid response times.
If any parts are received damaged or defective, please contact us. We are happy to replace
parts to ensure you have a fully functioning product.



help@vivo-us.com

AVG. RESPONSE TIME (within office hrs): **1HR 8M**



www.vivo-us.com

AVG. RESOLUTION TIME (within office hrs): **< 15 M**



309-278-5303

AVG. RESOLUTION TIME (within office hrs): **5M 4S**